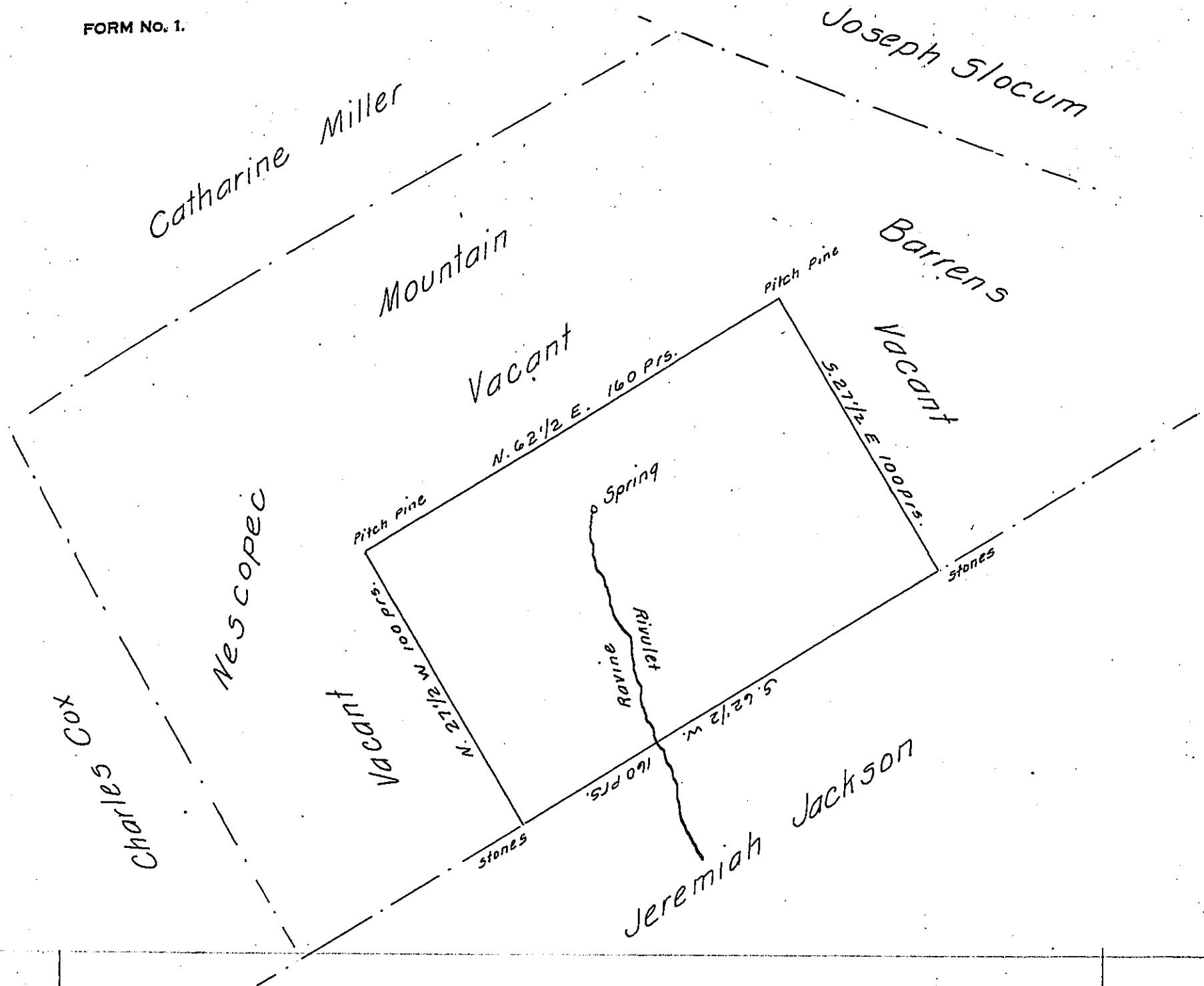


FORM No. 1.



Draft of a tract of land Situated in Wright township Luzerne County Containing One Hundred Acres & allowance Surveyed for Charles Miller the 31st day of May 1870 in pursuance of a Warrant dated the 17th day of February 1870.

pr. Jacob H. Bliem
Surveyor

I approve of the Above.
Patrick Blewitt
County Surveyor.

IN TESTIMONY that the above is a copy of the original remaining on file in the Department of Internal Affairs of Pennsylvania, made conformably to an Act of Assembly approved the 16th day of February 1833, I have hereunto set my hand and caused the Seal of said Department to be affixed at Harrisburg, this nineteenth day of December 1907.

Henry Howell
Secretary of Internal Affairs.